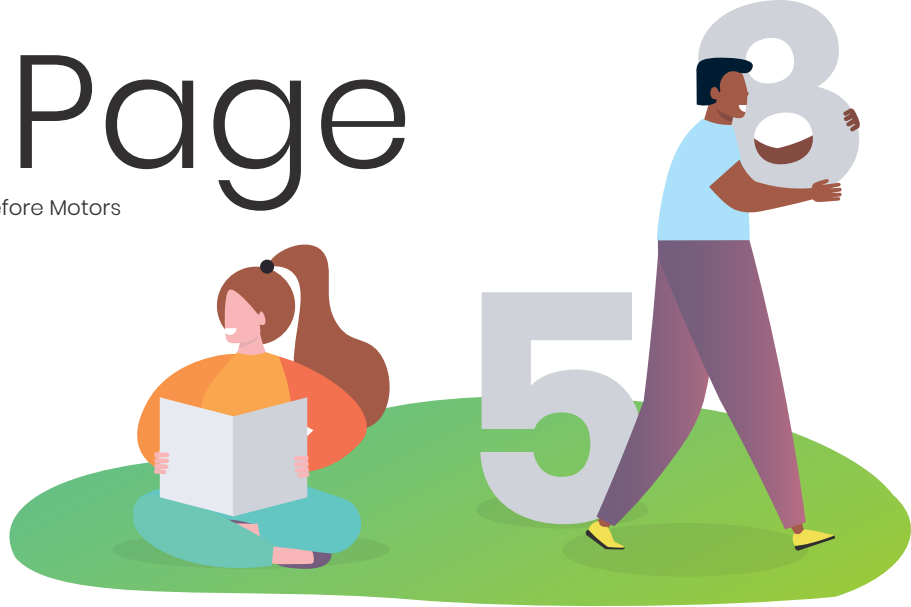


Puzzle Page

Solutions to these puzzles can be found just before Motors

Sudoku puzzle

		2		5				
6		5	8			1	9	3
4			3		6	2		
7			5	9			4	1
9	2		1		3		5	
1				4	7			8
2		6			8			9
		8	1			9	4	7
				1	5	8		

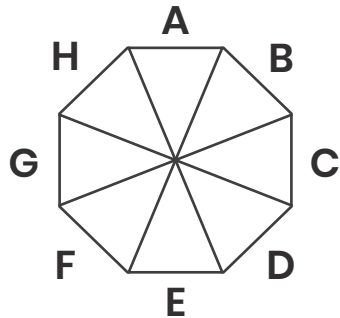


Arrow word

Follow the arrows to fit in your answers

Octa-Plus

Can you work out which eight numbers correspond with the letters A-H on the Octa-Plus diagram? No two numbers are the same. Each number is a whole number and no number is less than 1 or greater than 45.



- G minus F is either 10 or 11.
- E is a quarter of G.
- H is G divided by E.
- B is F times E.
- C is a ninth of F.
- D is B minus G.
- A third of F is an odd number.
- A is 150 minus the sum of the other seven numbers.

Lofty		Variety		Reservoir		Snakelike	Array		Crony		Australian
Perplex		meat				fish	Fiery				state,
											initially
						Persecute					Drink
						Baked item					
Cape		Bird of							Depleted		
		prey							Shooting		
		Bid							Star		
						Molecule				Legging	Traps
						Garish					
Fairy	Fragment						Type of				
	Words for						nut				
	a song										
			Satire	Well-being							Star
Conifer											
Annoy				Pique		Metallic	Barn				
						element	Redact				
								Musical			
								work			
Perform		Lukewarm						Employer		Destiny	Typeface
		Those									
		people									
			Edge Tool			Pen tip			Chart		Twitch
						Epoch					
Form							Edible				
							plant				
Photo	Put to use							Smooth			
equipment								fabric			
						Facet					

Gardening

Gardening

Grass

Sunshine

Rake

Lawnmower

Tree

Flowers

Shrubs

Spade

Compost

Planting

L	S	R	G	P	Y	L	A	W	N	M	O	W	E	R	S
D	W	G	H	L	F	J	F	A	W	T	G	Z	H	S	R
S	C	I	B	U	M	I	P	E	T	V	J	B	S	G	Q
A	X	H	H	B	C	G	N	R	S	G	O	V	R	T	I
J	C	D	L	H	N	I	E	Y	R	M	D	V	K	W	Q
G	M	O	G	Q	H	E	N	E	G	I	Q	P	E	F	B
H	A	C	M	S	T	Y	S	H	R	U	B	S	Y	E	I
F	I	R	N	P	R	S	H	E	K	M	M	U	D	P	I
Q	G	U	D	B	O	F	L	O	W	E	R	S	U	B	O
W	S	H	M	E	Q	S	D	P	P	P	X	N	X	N	L
D	T	K	K	G	N	I	T	N	A	L	P	N	K	N	G
P	Z	A	S	W	N	I	P	D	N	R	P	V	D	D	G
B	R	R	G	B	D	K	N	O	P	O	W	I	Z	R	B
V	C	Q	R	O	O	B	J	G	E	Z	E	D	A	P	S
L	I	Q	G	N	D	V	F	G	N	O	Q	S	D	Q	M
F	P	D	U	D	U	J	M	L	V	S	S	K	B	D	H

Move it!

How should the symbols appear in the empty grid to complete the logical progression

	○	
■		*

		*
	○	
■		

*	○	
■		

	○	
■		
*		

	○	
■		*

